



*The demanding enterprise environment is where Jatheon thrives. Our extensive PnC family of enterprise appliances offer the most versatility in deployment and storage. Our appliances can be deployed as stand-alone or in redundant clusters. Organizations that have many sites may also place Plug n Comply™ appliances locally and have messages sent to a central location.*

## New Features

- Enhanced feature set and user interface
- Enhanced hardware configuration including faster processing RAID configuration across full product line with battery back up units on hardware RAID units
- Increased storage availability ranging from 700GB to 27TB virtual storage
- Best value product in the industry

## PnC 1000 Data Sheet

Jatheon's PnC 1000 email archiving and retention appliance is designed for small to mid sized organizations, offering high end system robustness with hot-swappable RAID configured hard drives and a cold swappable power supply.

Jatheon has designed and developed Plug n Comply™, a family of appliance based email and message archiving solutions for companies seeking full regulatory compliance, internal policy management, storage space management, and eDiscovery functionality. Jatheon offers an all-in-one comprehensive, cost effective, and easy to deploy archiving appliance. It requires minimal IT support, offering simple management of corporate messaging data and related policy implementation.

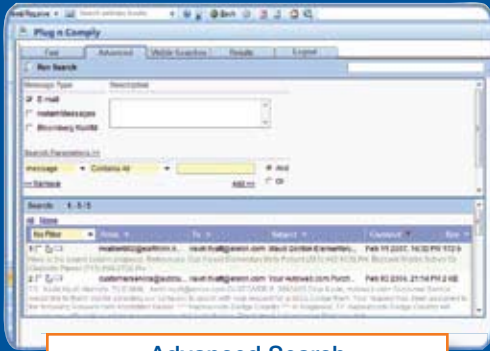
With the Jatheon Plug n Comply™ appliance, companies are provided with a turnkey solution to establish and enforce policies and compliance processes to meet Sarbanes-Oxley, SEC, NASD, Federal Rules of Civil Procedure, and other regulatory and corporate governance requirements.

---

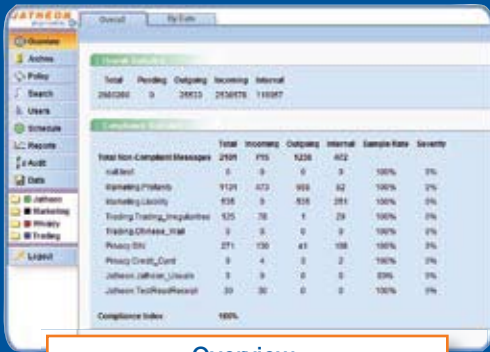
**Model:** PnC 1000  
**Virtual Storage:** 6 TB  
**RAID:** Hardware RAID 5  
**Form Factor:** 1U  
**Shipping Weight:** 48 lb

### Full Features Include:

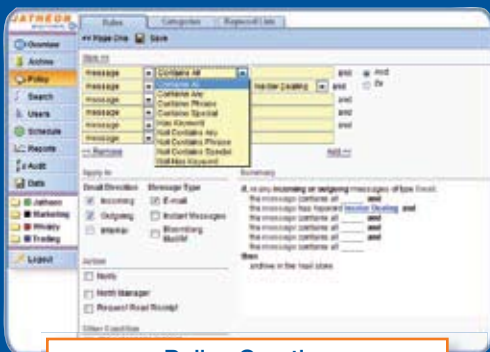
Full Indexing	Role Based Administration
Comprehensive Archiving	Outlook Plugin
Message Compression	Tamper Proof
Single Instance Storage	Comprehensive Audit Trail
Search and Retrieval	Web Based Interface
Retention Policy Management	Full Reporting and Statistics
Legal Hold	



Advanced Search



Overview



Policy Creation

## System Specifications

### System:

Processor: Intel C2D E8400 3.0 1333 6MB Dual Core 775  
Memory: 4 x 2GB PC3-10600 STD DDR3 1333  
Chipset: Intel X48  
Network: 1 x Intel 82573V Gigabit PCI-Express Ethernet Controller  
SATA: 4 x SATA (3Gb) Ports

### Chassis:

Form Factor: 1U; Rack-Mountable Chassis  
Dimensions: 17.2" x 1.7" x 25.6" (WxHxD)  
Cooling System: 4 x Cooling Fans

### Storage:

4 x Seagate Barracuda ES.2 1TB SATA 3.0 7200 3.5in  
1 x Panasonic UJ875 Black IDE 8X DVD-RW Slim Slot

### Raid:

3ware Escalade 9650SE-4LPML PCI Low Profile Battery Back-up RAID Controller Card RAID 5

### Graphics:

Onboard 16MB ATI ES1000 Graphics

### Multiple I/O:

USB: 2 x Rear USB 2.0 Ports; 2 Internal Headers Provides 4 Ports  
Serial Ports: 1 x Serial Port; 1 x Serial Port Header  
Keyboard/Mouse: 1 x PS/2 K/B, 1 x PS/2 Mouse  
LAN: 2 x RJ-45 LAN Ports  
VGA: 1 x VGA Port

### Front Panel:

Power On/Off button  
System Reset button  
1 x Power LED  
1 x Hard Drive Activity LED  
2 x Network Activity LEDs  
1 x System Overheat LED  
1 x UID LED

### Power Supply:

560W AC Power Supply w/ PFC  
24-pin, (4-pin=12V)  
UL Approved, FCC Compliant